

ADDENDUM NO. 1

REQUEST FOR PROPOSALS (RFP) 16006 STRUCTURED CABLING SYSTEMS NORTH CENTRAL WEST VIRGINIA ADVANCED TECHNOLOGY CENTER September 8, 2015

A. CLARIFICATIONS AND MODIFICATIONS TO THE RFP

1. This Addendum is posted on the West Virginia Higher Education Policy Commission (HEPC) purchasing webpage at the following URL. The name of the successful vendor(s) will also be posted on the HEPC purchasing webpage and will constitute official notification of the contract award.

<http://wvhepc.org/purchasing/>

2. Sealed Proposals will be received until 3:00 PM, Eastern Time, September 15, 2015 by:

Chief Procurement Officer
RFP 16006
West Virginia Community and Technical College System
1018 Kanawha Boulevard, East, Suite 700
Charleston, WV 25301

Electronically transmitted (faxed or emailed) proposals will not be considered.

3. If questions were submitted by the deadline, 5:00 PM, Eastern Time, September 4, 2015, but are not answered in this Addendum please contact the Chief Procurement Officer immediately but not later than 5:00 PM, Eastern Time, September 10, 2015.
4. The pre-proposal meeting held at 1:00 PM, September 2, 2015, was a non-mandatory pre-proposal meeting. The sign in sheet for this meeting was posted to the purchasing webpage September 3, 2015.
5. City of Fairmont Business & Occupation (B&O) Tax of two percent (2%) applies to this project.

B. DRAWING REVISIONS INCLUDED

1. Drawing T401 Telecom Riser Diagrams

C. VENDOR QUESTIONS AND ANSWERS TO QUESTIONS

- Q1.** Drawing T401 – keynote 15 wall mount lockable Cabinet. IDF 102B shows a keynote 16, please specify if this is supposed to be keynote 15 wall mount rack or standard 4 post rack.

Answer: For IDF 102B provide server cabinet per 27 10 00 – 3.02.D

- Q2.** Drawing T301 Keynote 5 is calling for a 6" wide Vertical Manager. Spec Section 271000-2.04 Communication Equipment Room B-6 Calls out for 12" wide double sided manager. Please Specify

Answer: Provide 6" vertical cable managers on the ends of each rack group. Provide 12" vertical cable managers in between cabinets in lieu of two 6" vertical cable managers.

- Q3.** Drawing T202B- Print shows Multiple location with 2D, 5D, 6D, with no symbol beside markings, are we to assume that there is to be Data at these location.

Answer: Refer to the chart on the legend sheet for standard data drop requirements for each floor box type where there are no modifiers indicated adjacent to the floor box. The 2D, 5D, 6D are modifiers to indicate deviations in data drop requirements at the specific locations where indicated.

- Q4.** Substitution request, we request the following be considered: HS---, S-Series, Horizontal Cable Manager, Hubbell NEXTFRAME® Equipment Rack, and Hubbell Premise Wiring's NEXTFRAME® Ladder Rack.

Answer: Substitution request approved.

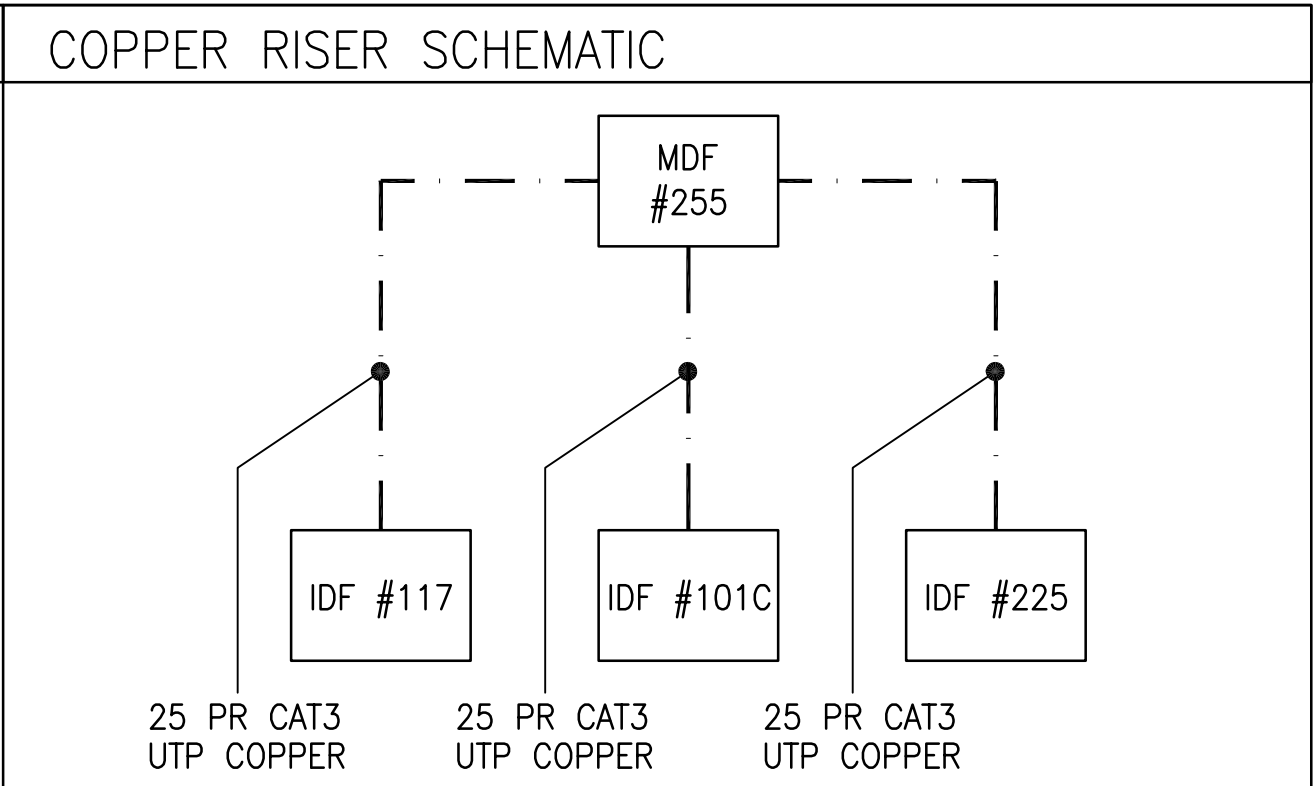
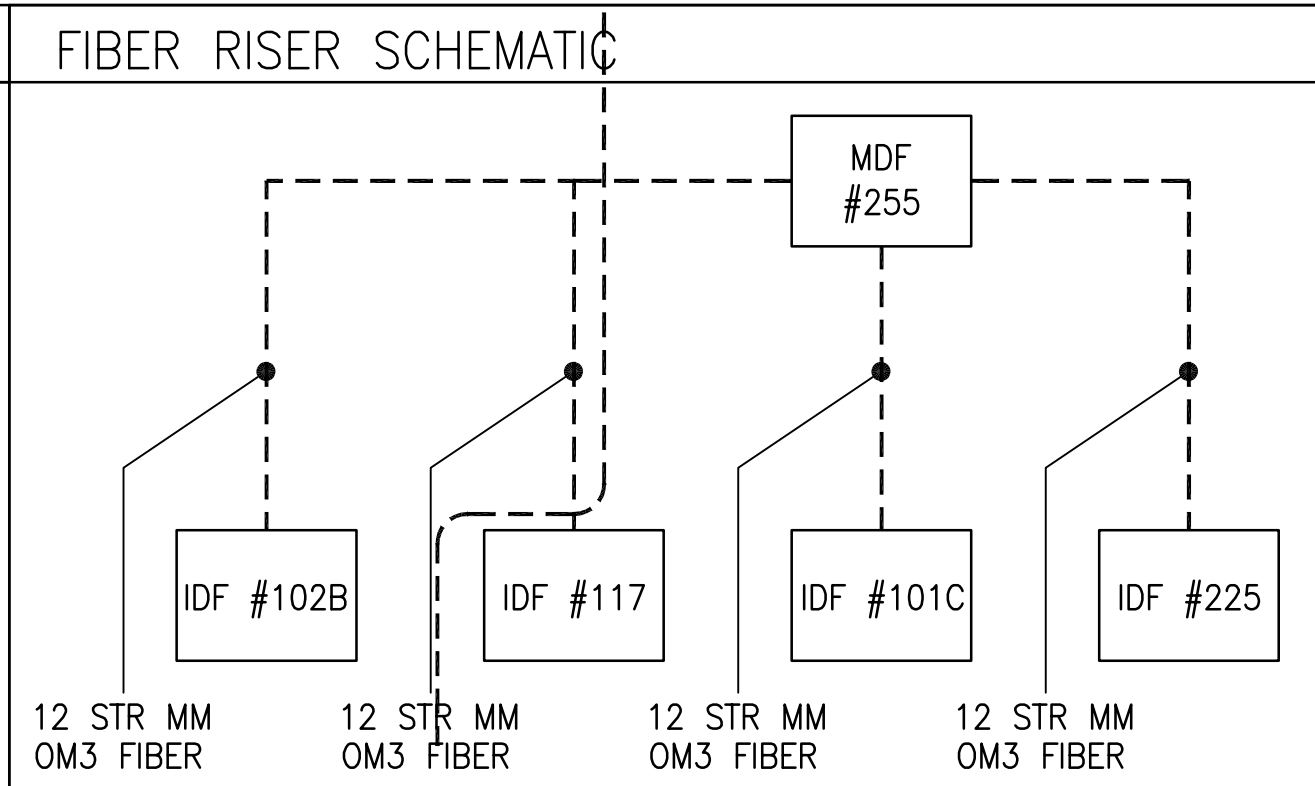
GENERAL NOTES

- GROUND ALL RACK EQUIPMENT TO THE FRAME. BOND ALL COMMUNICATIONS ENCLOSURES AND RACKS TO THE TELECOM GROUND BUS BAR. REFER TO ENLARGED PLANS FOR ACTUAL LOCATION.
- ALL TELECOM GROUND BUS BARS (TGB) WILL TIE TO THE MAIN TELECOM GROUND BUS BAR (TMGB). THE TMGB WILL TIE TO THE MAIN ELECTRICAL GROUND BAR.
- PROVIDE PROPER CABLE MANAGEMENT RINGS AND VERTICAL CABLE RUNWAYS FOR VERTICAL CABLES ON THE TELECOM ROOM WALLS.
- ALL COMMUNICATIONS OUTLETS SHOWN ON FLOOR PLANS WILL ROUTE BACK TO DEDICATED TELECOM ROOM'S 48 PORT PP THROUGH HORIZONTAL DISTRIBUTION RACEWAYS. REFER TO TELECOM ENLARGED PLANS FOR ACTUAL EQUIPMENT LOCATIONS AND TO FLOOR PLANS FOR CONDUIT ROUTES AND LOCATIONS.

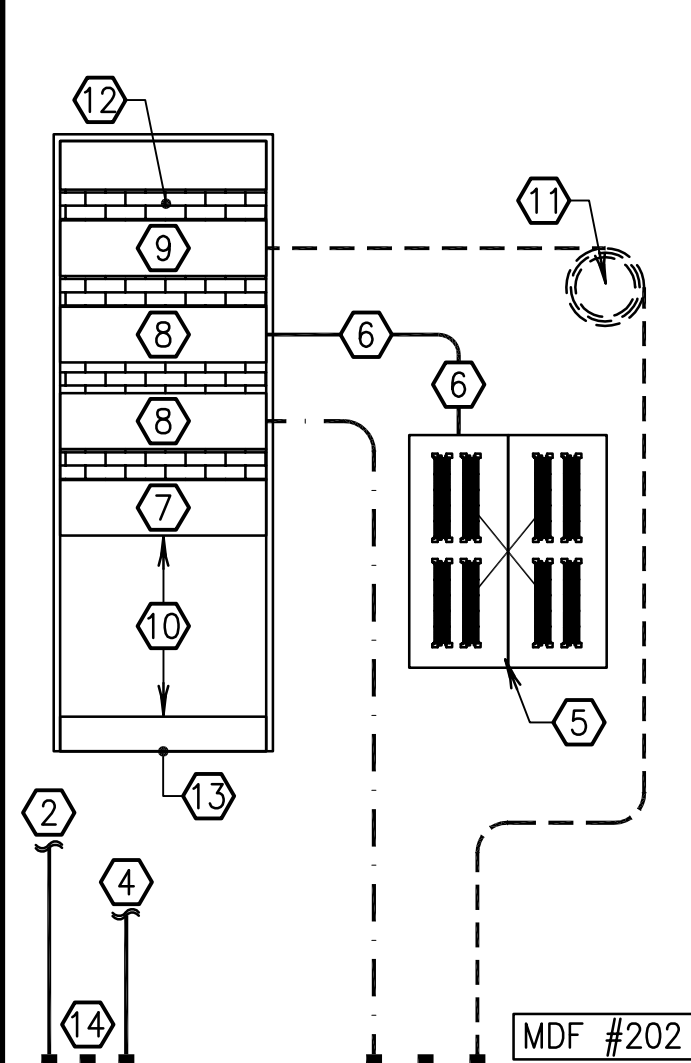
GENERAL MATERIAL LEGEND

25 PAIR OSP CAT3 COPPER CABLE ————

12 STR MULTI-MODE (OM3) INDOOR/OUTDOOR FIBER CABLE ————

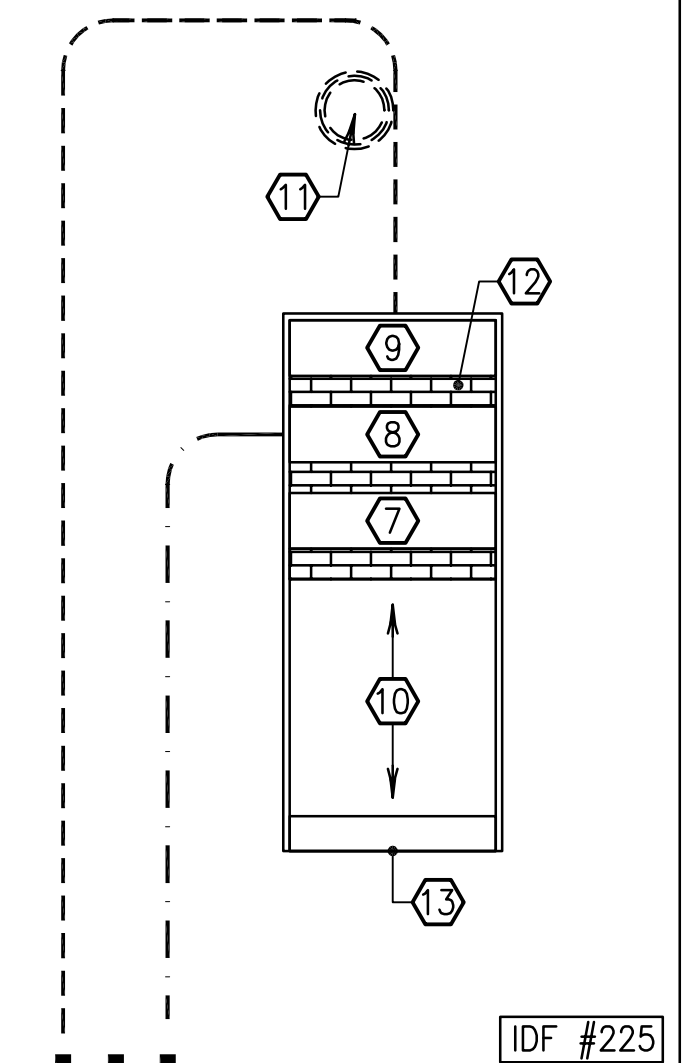


LEVEL 3

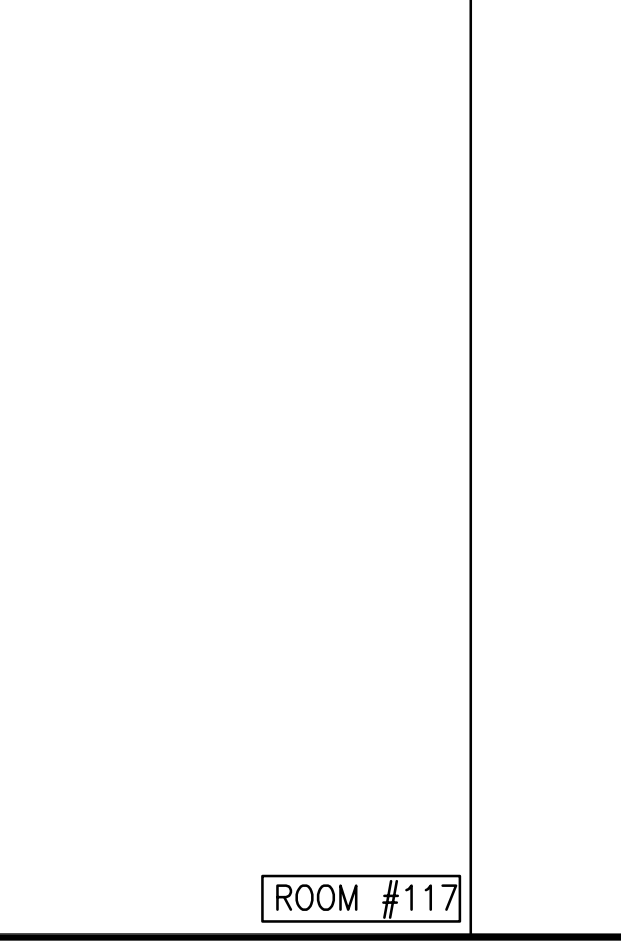
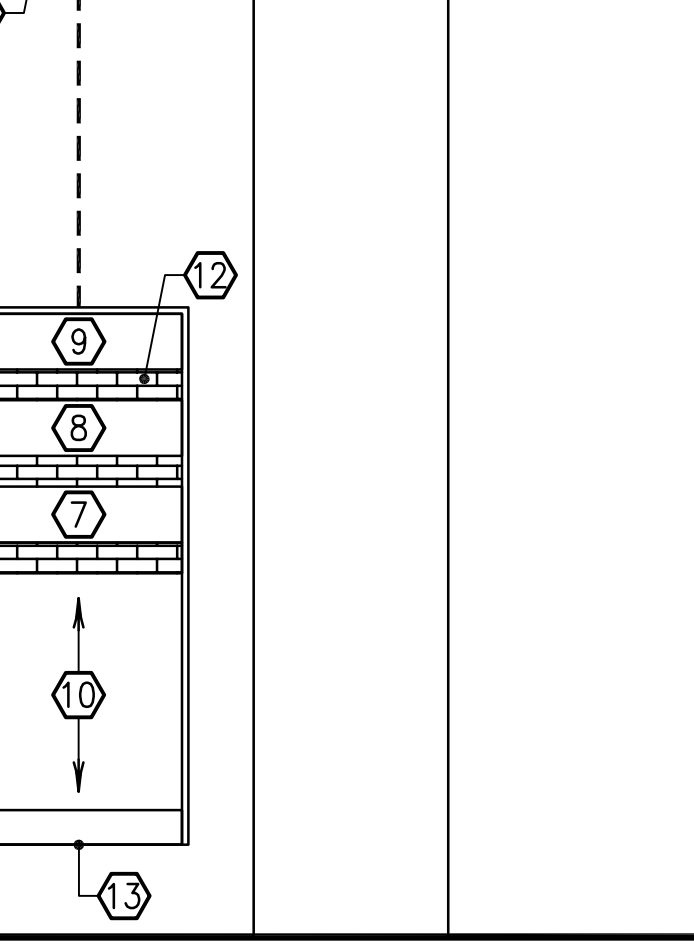
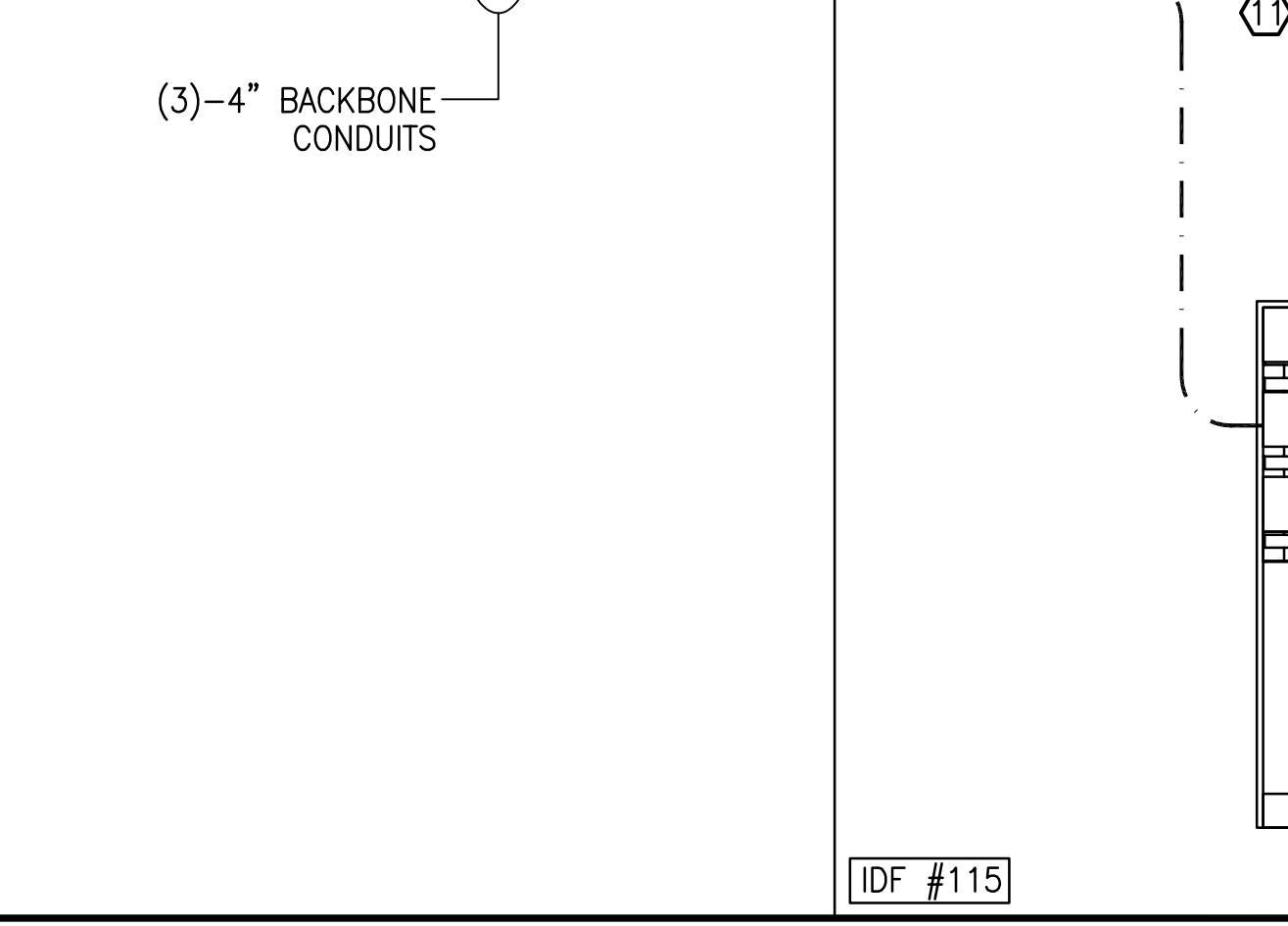
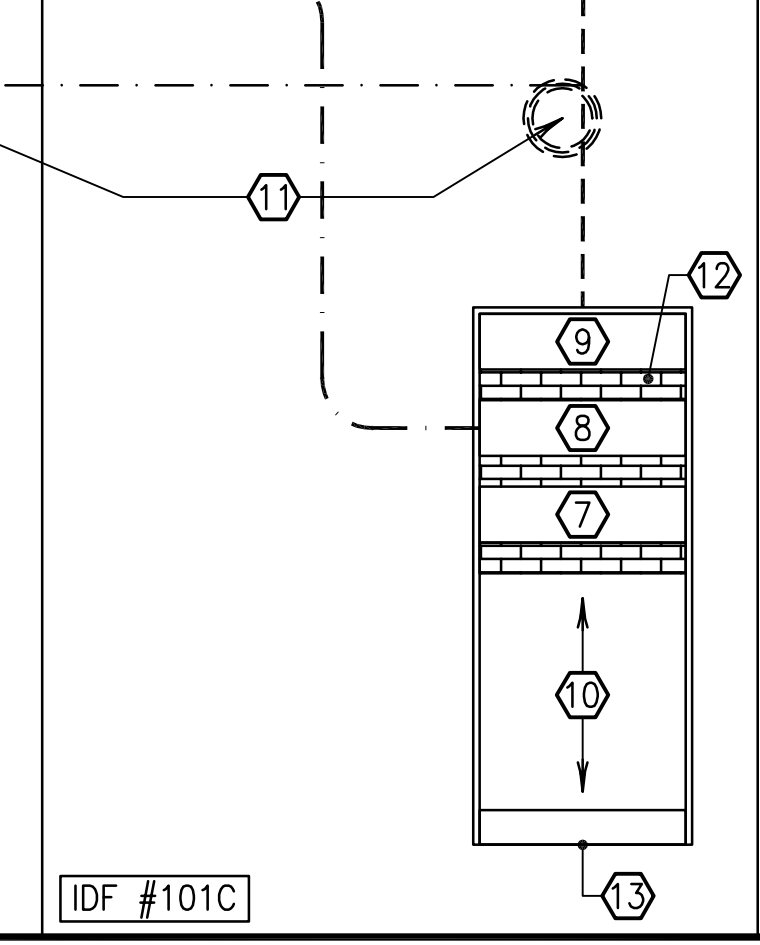
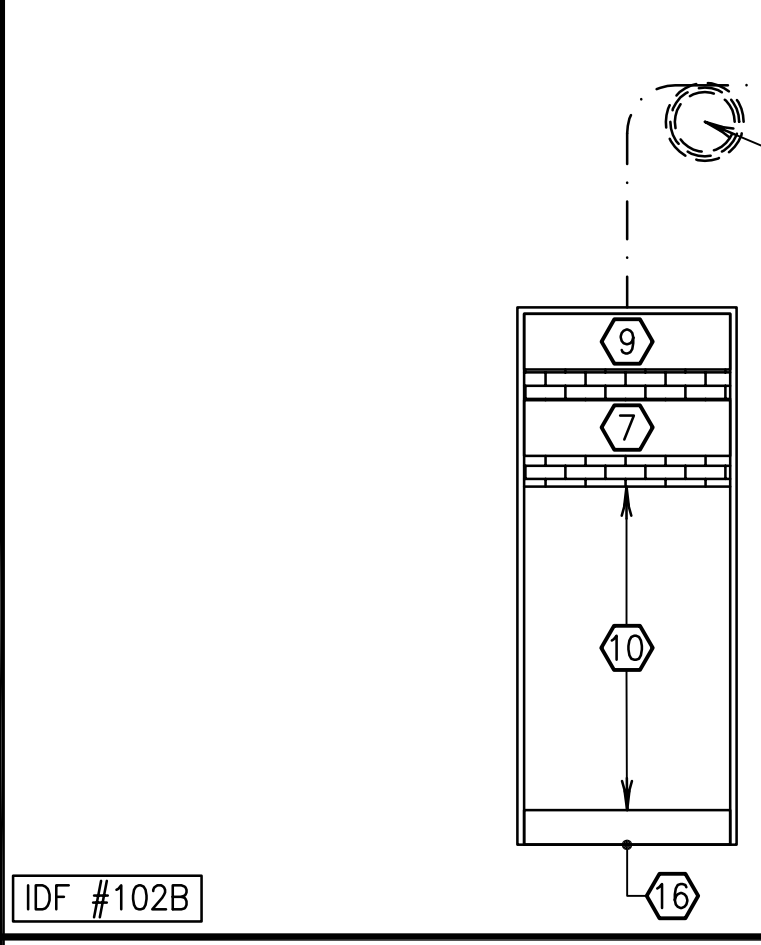
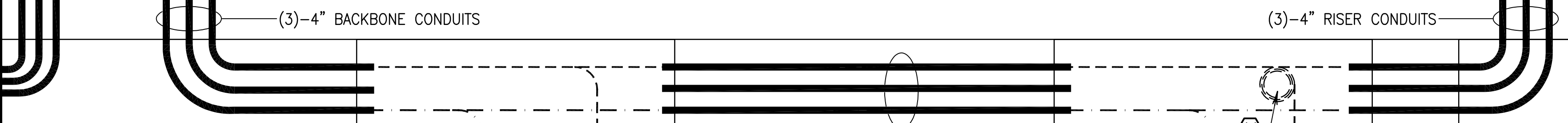


KEYED NOTES (THIS SHEET ONLY)

- PROVIDE (3)-4" ENTRANCE CONDUITS FROM DUCTBANK SYSTEM WITH FIRE-STOPPING MATERIAL AND NYLON PULL ROPES INTO MDF. CONDUITS SHALL CONNECT INTO DUCTBANK SYSTEM INDICATED ON CIVIL SITE PLANS.
- OUTSIDE PLANT ENTRANCE FIBER BY SERVICE PROVIDER.
- DISTRIBUTION CABLE TRAY. REFER TO FLOOR PLANS AND LEGEND FOR SIZE AND LOCATION.
- OUTSIDE PLANT ENTRANCE COPPER BY SERVICE PROVIDER.
- WALL MOUNTED 110 BLOCKS.
- INSIDE PLANT 25 PAIR CAT3 COPPER CABLE. TERMINATE ONE PAIR PER PORT.
- MODULAR 48 PORT PP WITH 8-PIN, RJ-45 CONNECTORS FOR HORIZONTAL DISTRIBUTION. QUANTITIES AS REQUIRED.
- MODULAR 48 PORT VOICE PP. ONE PAIR PER PORT.
- PROVIDE MULTI-MODE FIBER OPTIC PATCH PANEL WITH FIBER TRAY AND 'LC' CONNECTORS.
- LAN ELECTRONICS AND MEDIA CONVERSION.
- 20' SERVICE FIBER LOOP FOR MAINTENANCE.
- HORIZONTAL CABLE MANAGER (HCM). PROVIDE A HCM BETWEEN ALL PATCH PANELS, EQUIPMENT AND TRAYS (TYPICAL).
- FLOOR MOUNTED TYPICAL 19"W x 84"H RACK FOR TELECOM EQUIPMENT AND CABLING. REFER TO ENLARGED PLANS FOR QUANTITIES AND LOCATIONS.
- SPARE CONDUIT (E.G. FUTURE CATV)
- WALL-MOUNTED, LOCKABLE IDF CABINET 32"D x 26"W x 36"H. MOUNT CABINET RIGHT BELOW ACCESSIBLE CEILING. BASIS OF DESIGN: MIDDLE ATLANTIC #CWR-18-32PD.
- SERVER CABINET



TERRAIN/GROUND LEVEL 2



LEVEL 1

IDF #102B

IDF #101C

IDF #115

ROOM #117

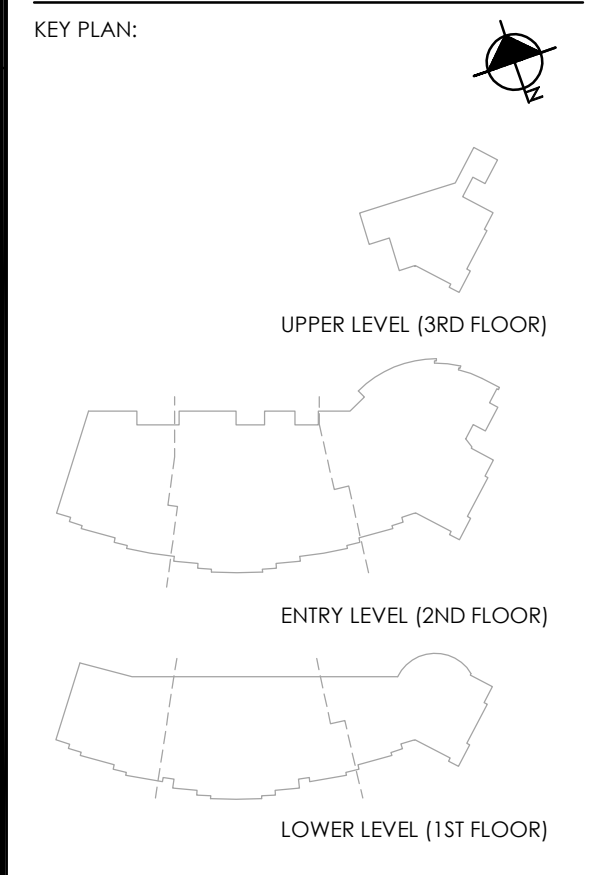
Newcomb & Boyd
 Copyright © 2014
 Consulting Engineering Group
 Suite 525
 303 Peachtree Center Avenue, NE
 Atlanta, Georgia 30303-1277
 T 404 730-8400
 F 404 730-8401
 CONTACT: JOHN TOKAJI
 N&B PROJECT: 14N036

PROFESSIONAL SEAL:

CTCS
 COMMUNITY AND TECHNICAL COLLEGE SYSTEM OF WV

PIERPONT
 COMMUNITY & TECHNICAL COLLEGE

**NORTH CENTRAL
 ADVANCED
 TECHNOLOGY
 CENTER**
 Marion County, WV



REVISIONS:

NO.	DATE	DESCRIPTION
Δ	9/8/2015	ADDENDUM #1

**TELECOM
 RISER DIAGRAMS**

SHEET TITLE:
RFP-16006 RFP
 PROJECT NO: PHASE: **T401**
 08.18.2015
 RELEASE DATE: